

Innovative Technologies

Pipe Tapping & Stopping

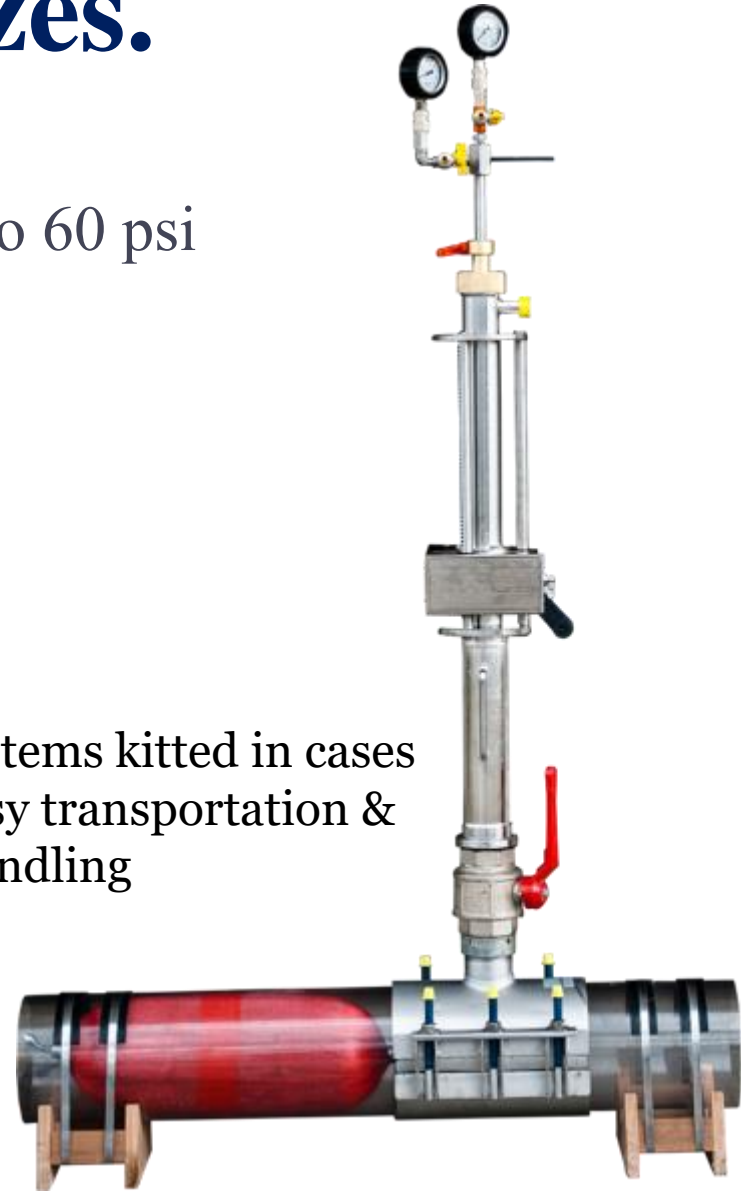


MCS Systems and Sizes.

- MCS60-38: 3" – 8" up to 60 psi
- MCS60-1016: 10" – 16" (18" PE) up to 60 psi
- MCS60-1824: 18" – 24" up to 15 psi



All systems kitted in cases for easy transportation & job handling



Kleiss MCS Flow Stopping System Features

- Lightweight
- One set of equipment for different pipe material (PE, Cast Iron, Steel, PVC)
- Gauges on tower to read upstream and downstream pressures
- Capable of bleeding down through the system.
- Built in by-pass within system.
- 3X safety factor
- Patented MCS Stopper

MDS Stoppers

- Multi-Dimensional Safety (MDS) Stopper
- Patented stopper, fiber reinforced
- Maximum sealing area
- Sized for all pipe materials and range of wall thicknesses
- 60 psi applications designed with gripper (GTI)



Kleiss Fittings



**1.) NUPI PE
Fitting**

**2.) Cast Iron
Fitting**

**3.) Steel Fitting
(3"-8")**

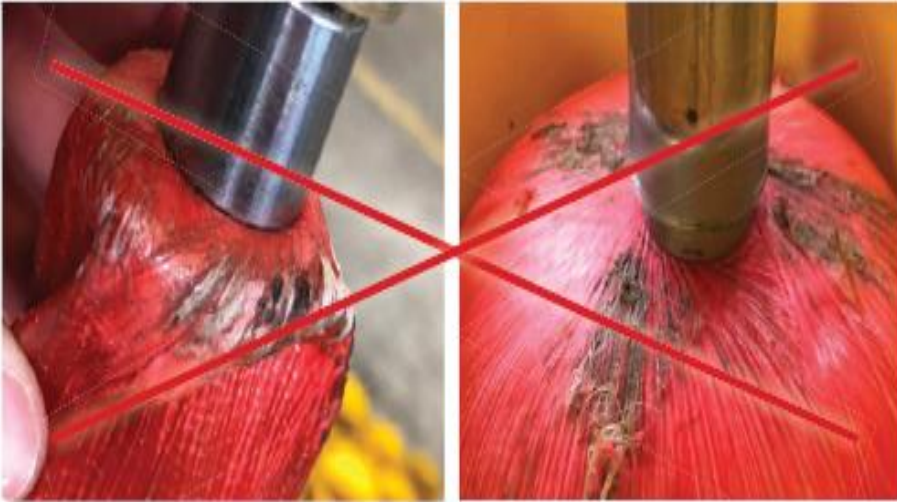
Service

- **Recommendations (general maintenance)**

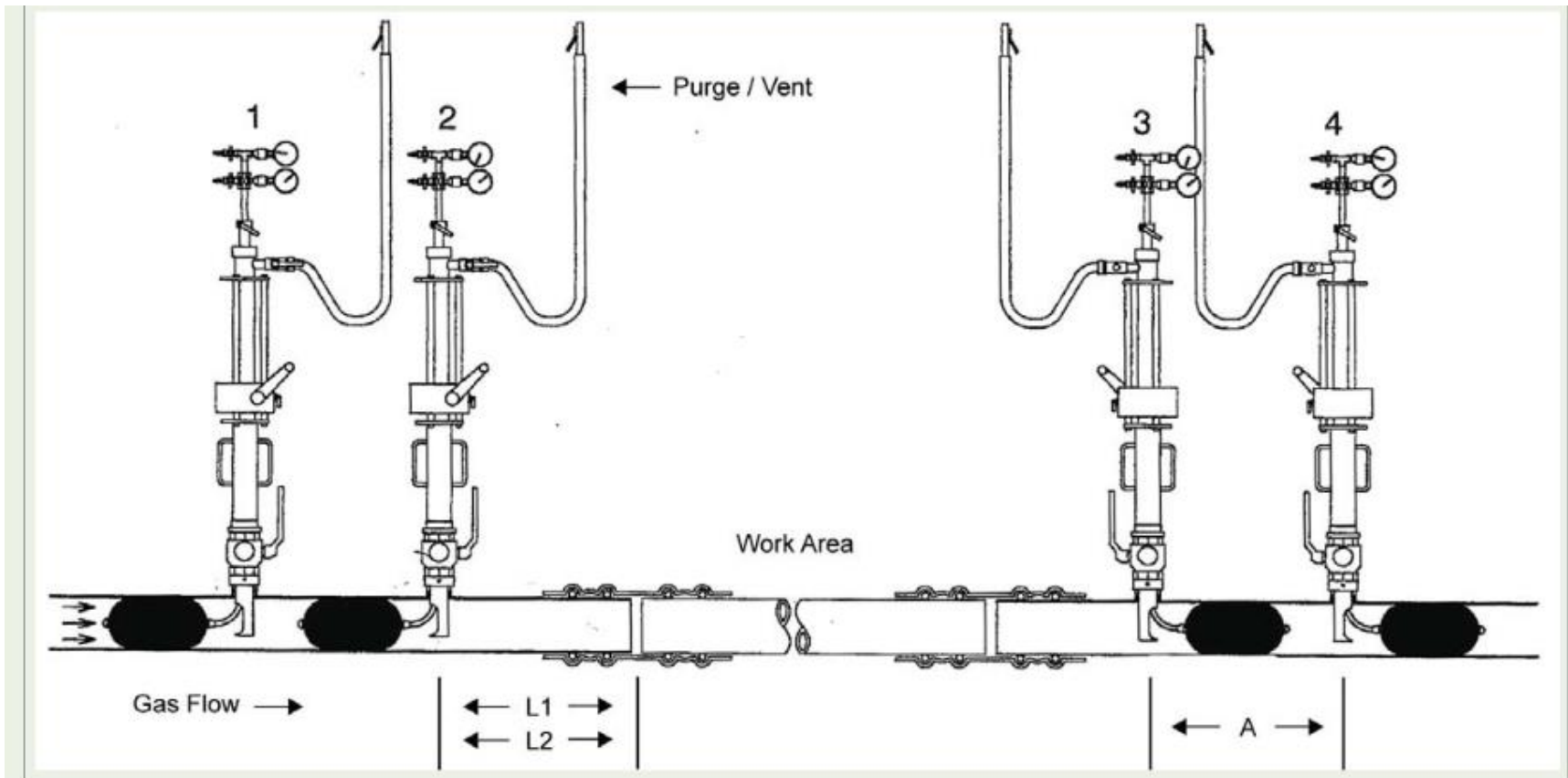
Equipment should be cleaned and inspected after every use, as well as stored properly

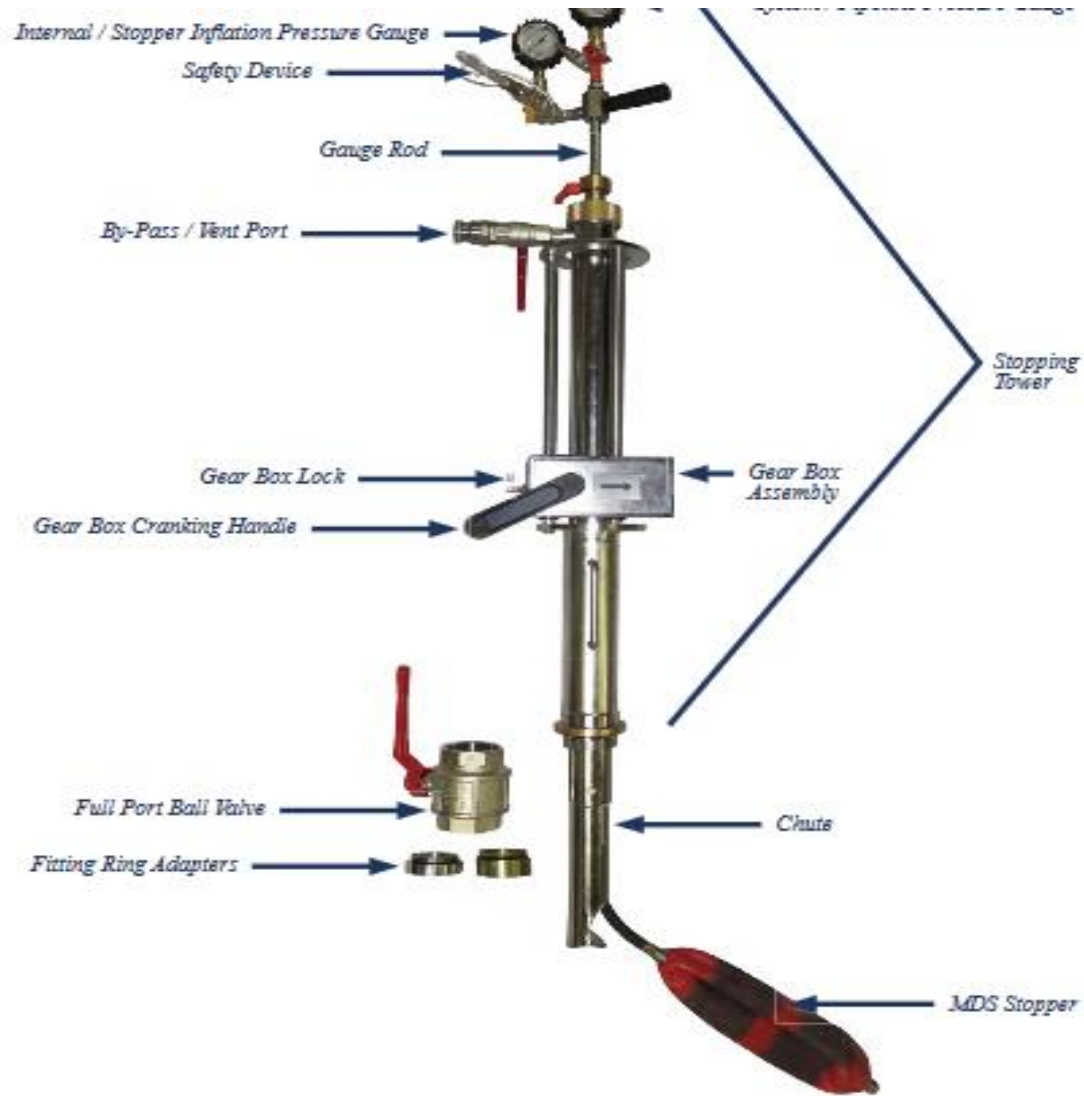
- Clean dirt and debris from towers, threads
- Check all gaskets are in place and in good condition
- Grease stopper rod
- Nuts, bolts, and washers should be dry when stored.
- Stoppers should be wiped down (use Dawn dish soap if they are greasy) replace thread caps
- Check for wear on stoppers.

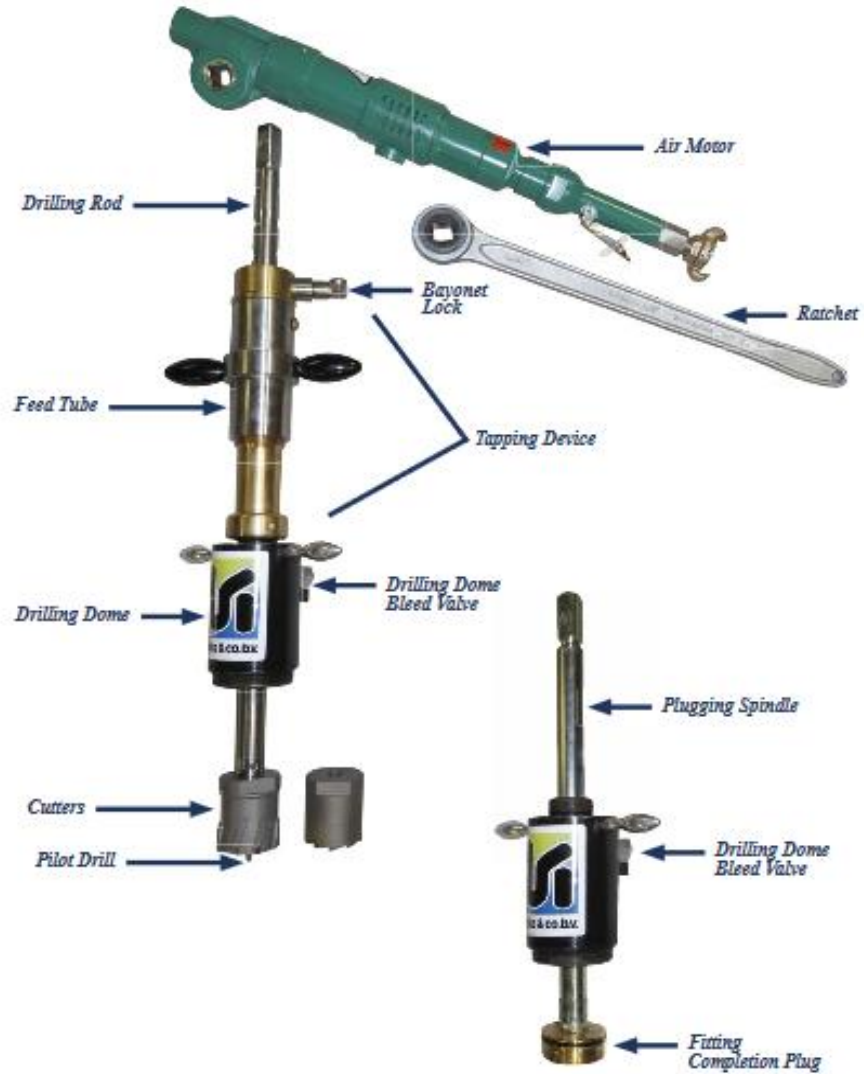
Stoppers



Stopper/Tower Setup







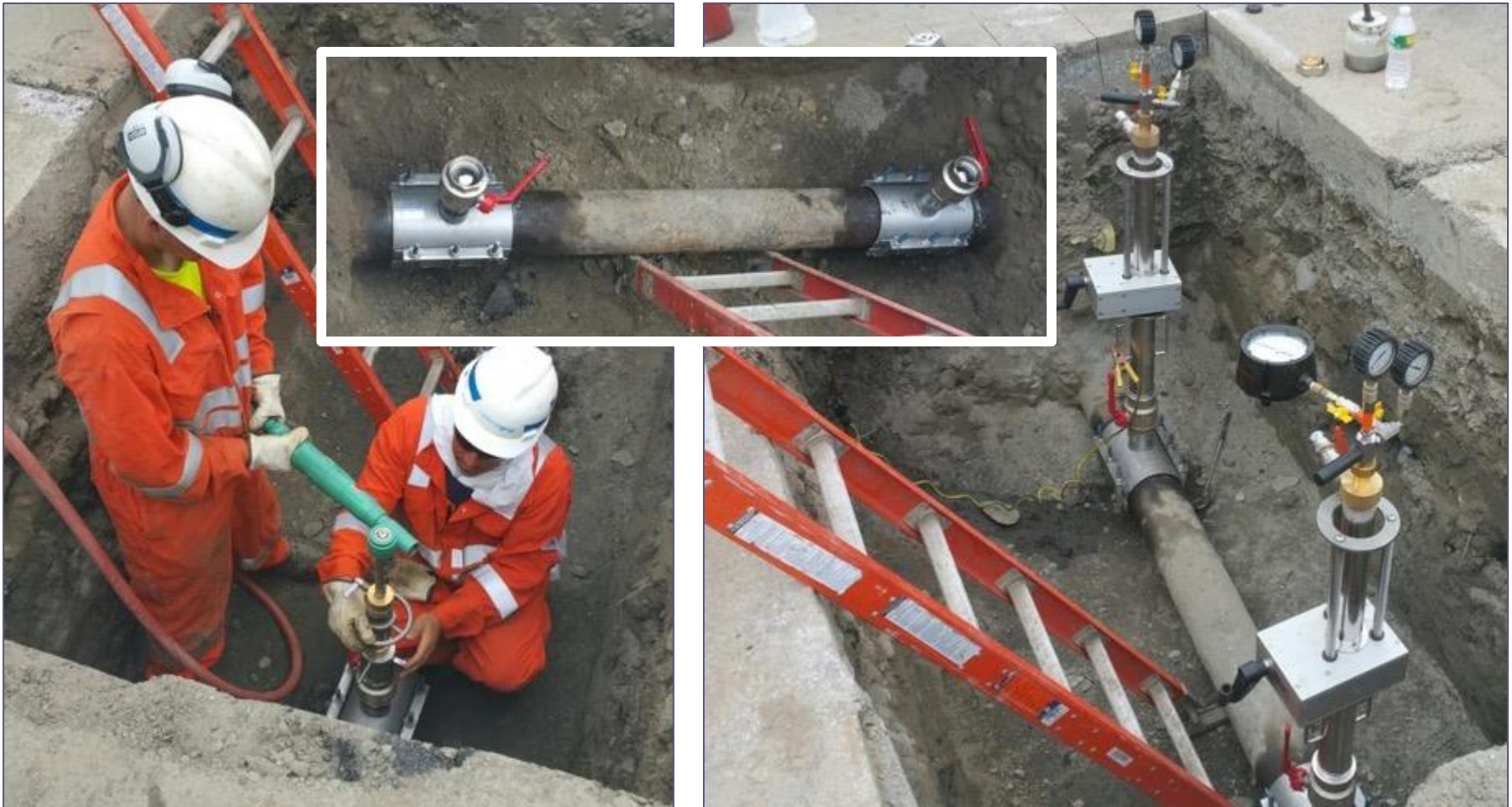
Field Demo, Michigan

16", Cast Iron, Gas Pipeline, 7 psi



MCS60-38 Demo, Rhode Island

6", Cast Iron, Gas Pipeline, 10 psi



Stopping System – High Pressure MCS60-38



Flow Stopping: 3" – 8" operating at pressure up to 60 psi



MCS60-38 Demo, 6", Steel, Gas Pipeline, 2 psi



MCS60-38 Demo, 8", Steel, Gas Pipeline, 8 psi



MCS60-38 Demo, New York

6", Polyethylene, Gas Pipeline, 25 psi



MCS60-38 Demo, 6", Polyethylene, Gas Pipeline, 12 psi



Field Demo, Michigan



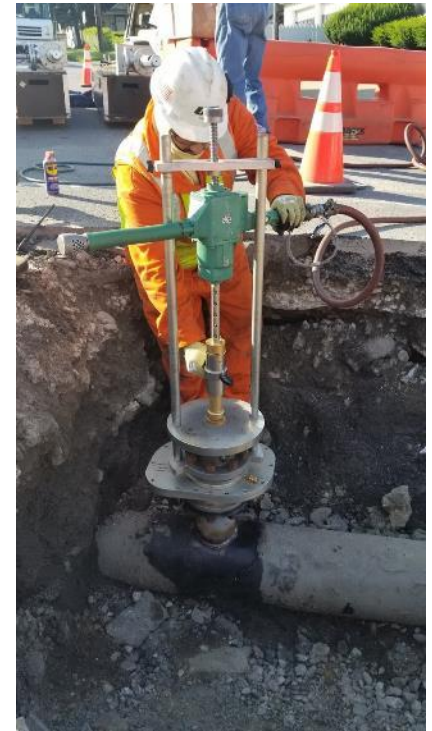
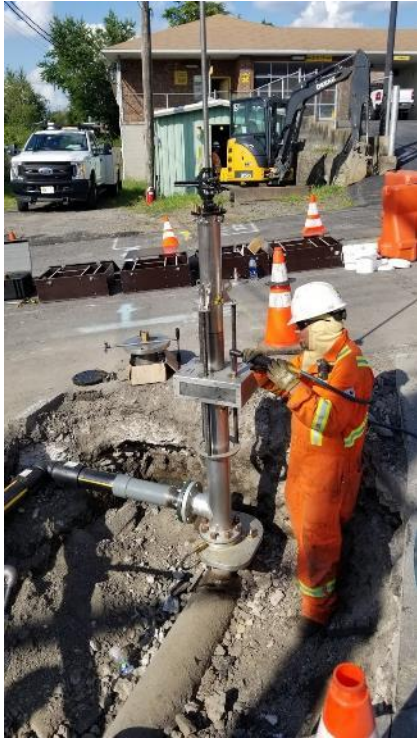
MCS60-1016 Demo, 16", Polyethylene, Gas Pipeline, 22 psi



Pictures of 24" Cambridge Job















Hands on Demo



- Nick Torkildsen
- Mulcare Pipeline Solutions
- Tooling and Distribution Products Manager
- 862-702-6030
- ntorkildsen@mulcare.com