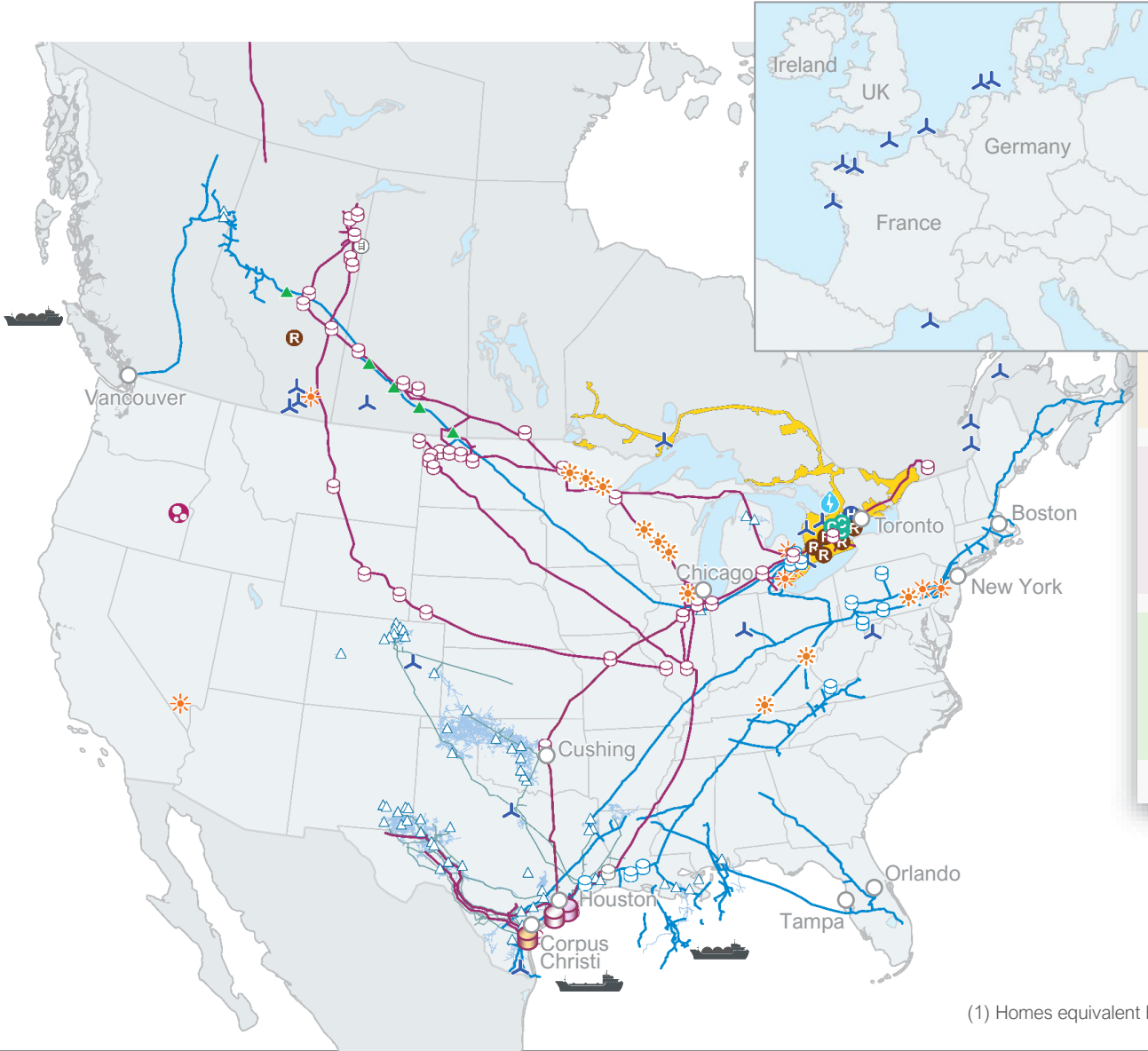

NGA Pre-Winter Meeting

Our Assets are Critical Conduits



Supply natural gas to markets with
>170 MM people

Deliver natural gas utility service to markets with
~15 MM people

Transport crude oil sufficient to meet
~25% of N.A.'s demand

Produce enough renewable energy to power
~900,000 homes¹

(1) Homes equivalent based on net operating capacity



We are broadly aligned with regional climate goals

Our 2023 progress:

Our ESG goals

Net-zero emissions
by 2050 from
2018 base year



Reduce emissions intensity by 35%
by 2030 from
2018 base year



How we get there

- Modernization, technology, and innovation improvements applied
- Procuring lower-carbon electric power to operate our assets
- Building and operating renewable “self-power” generation facilities to reduce emissions related to the energy consumed by operations
- Investment in low carbon projects and businesses (RNG, CCUS, Hydrogen)

Integrity Management Program Overview

Continued build-out of transformation initiatives is imperative to drive program confidence, efficiency and effectiveness; they are the foundation for sustainable risk reduction and efficiency

Performance

- Remediated the highest risk segments and developed action plans for the remaining segments
- Implemented pipeline assessments as a “check and control” to define the confidence interval on risk evaluations; initiated the same process for Facility Integrity program
- New Jersey earthquake impact was evaluated per our seismic standards and determined no impact to our system

Improvements and Successes

- Improved confidence and reduced likelihood of a significant incident by 5X since 2019

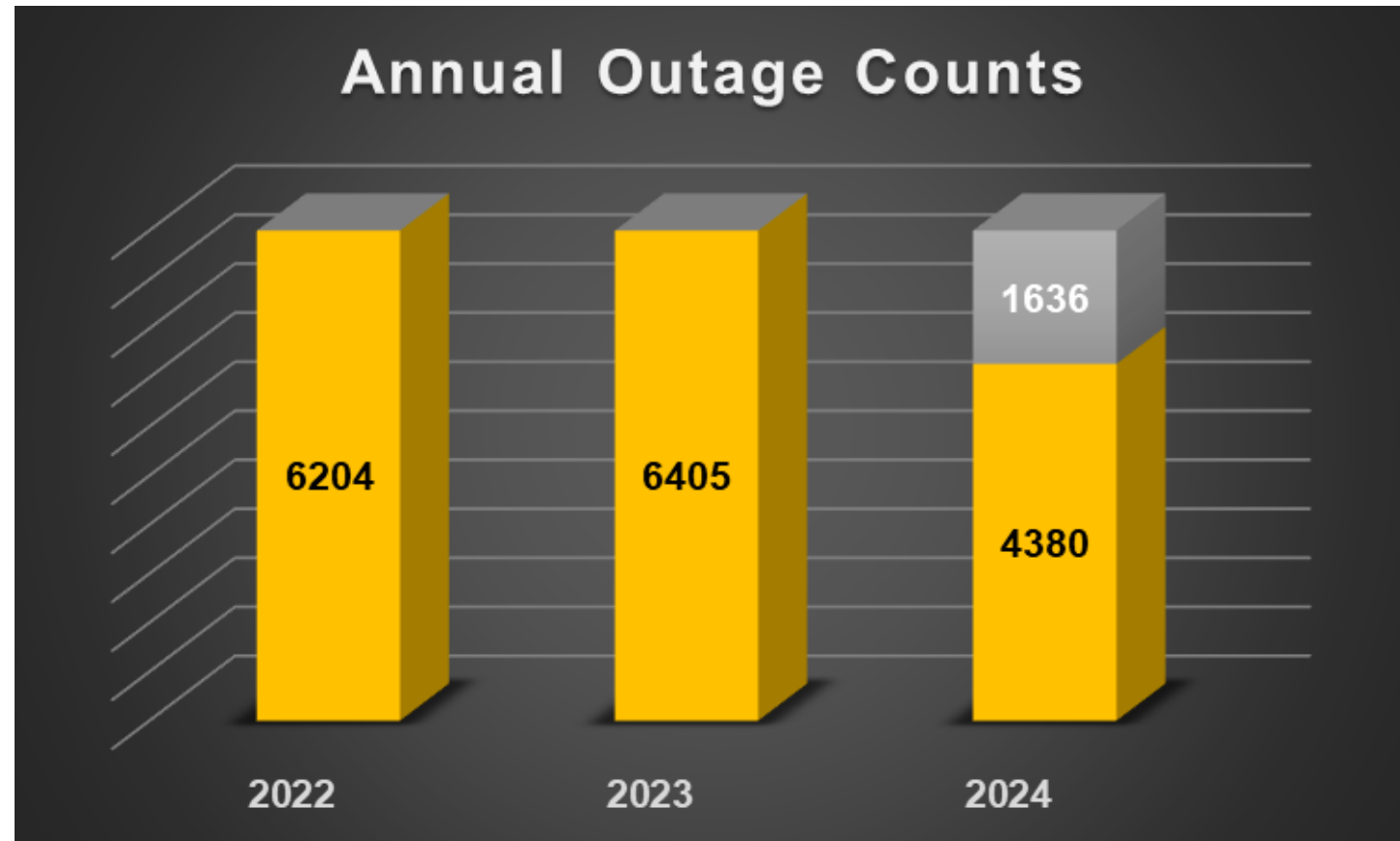
Pipeline Integrity Execution	2018	2019	2020	2021	2022	2023
In-Line Inspection Tool Runs Completed	86	305	298	289	333	271
Anomaly Digs	655	980	1,147	1,132	829	720
Immediate Digs	N/A	N/A	121	57	40	33
Total Pressure Restricted Miles Remaining	126	1,424	711	131	35	30

2024 In-Line Inspection tool runs are expected to be comparable to 2023 and anomaly and immediate digs are expected to decrease

Outage Management

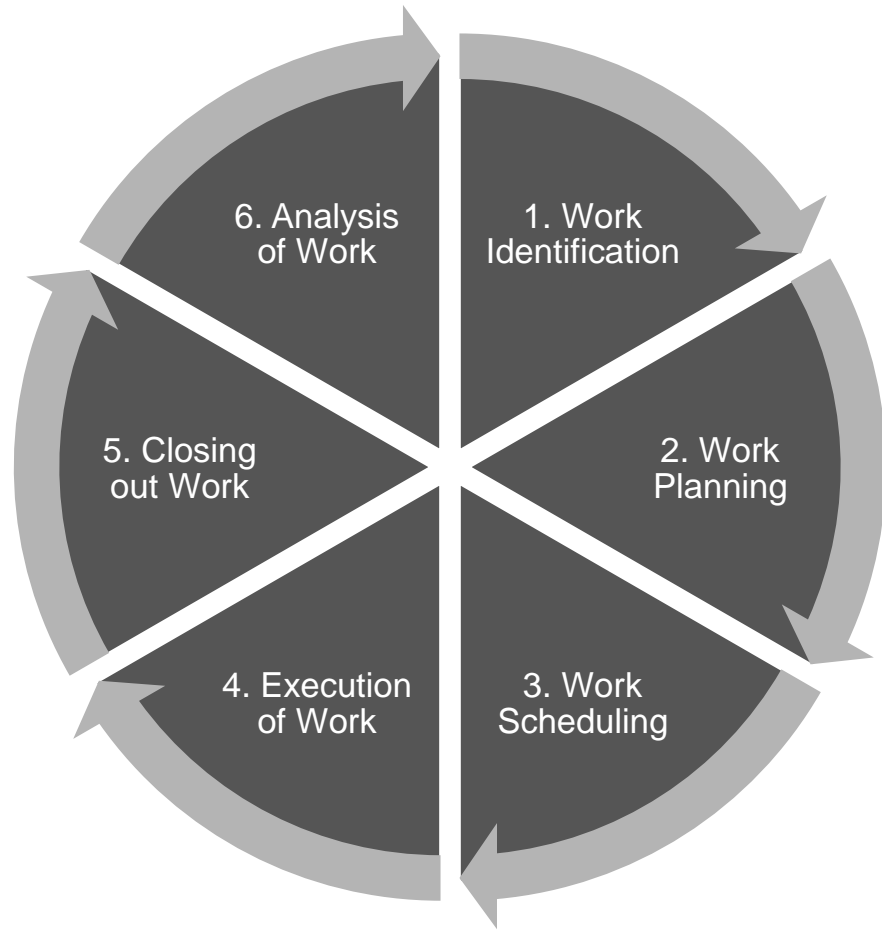
- Outage management strategy is to bundle overlapping outages where possible and avoid compounding outages
- Goal is always to minimize customer impacts while executing the work in a safe, reliable, and responsible way

An outage is any work that causes or has the potential to cause a reduction of capacity or throughput



Optimizing ~6,000 outages annually

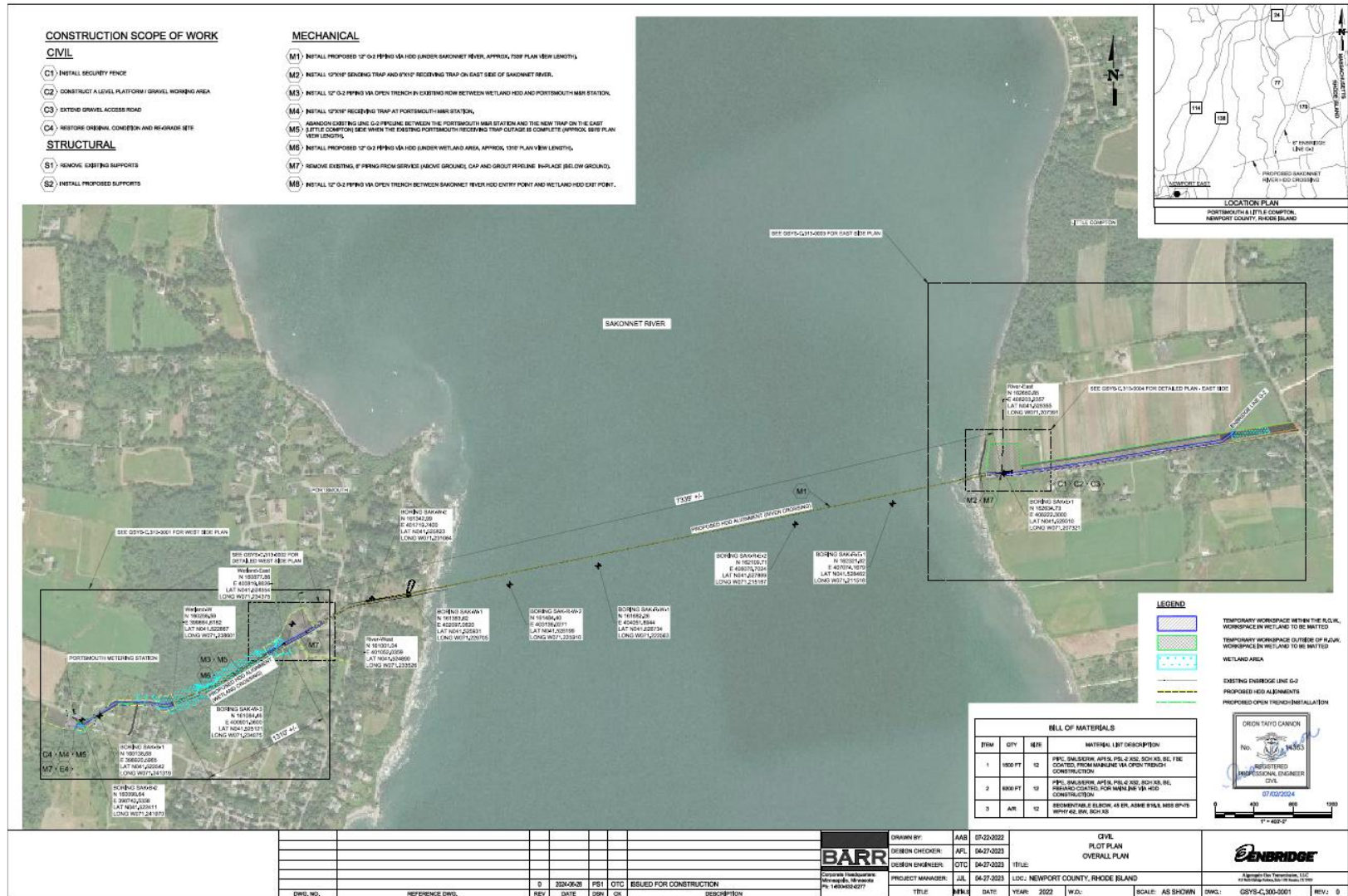
Optimizing Across the End-to-End Process



Key Improvements in Progress

- Identifying work scopes 2-3 years in future and planning logical overlaps
- Planning philosophy
 - foundational outages first
 - front loading plan with most impactful work
 - plan A, B, C ready to execute
- Leveraging technology in planning and scheduling process
- Streamlining execution processes and communication expectations
- Learning from past and incorporating into future

SAKONNET RIVER HDD



AGT – Supply Diversity (Winter)

Operator	Nov 2020 - Mar 2021		Nov 2021 - Mar 2022		Nov 2022 - Mar 2023		Nov 2023 - Mar 2024	
	Avg Daily	Percentage	Avg Daily	Percentage	Avg Daily	Percentage	Avg Daily	Percentage
Maritimes NE (Salem)	44	1.9%	15	0.6%	9	0.4%	22	0.9%
Northeast Gateway Lateral	0	0.0%	19	0.8%	0	0.0%	0	0.0%
Everett Marine Terminal (Constellation)	34	1.5%	18	0.8%	3	0.1%	5	0.2%
Tennessee - Mendon	97	4.2%	114	4.8%	117	5.1%	122	5.1%
East End Supply Total	176	8%	166	7%	129	6%	148	6%
Columbia Hanover	28	1.2%	38	1.6%	39	1.7%	39	1.7%
Iroquois	0	0.0%	0	0.0%	0	0.0%	10	0.4%
Millennium	881	37.8%	824	34.6%	856	37.3%	843	35.7%
Tennessee - Mahwah	870	37.3%	922	38.7%	899	39.2%	928	39.3%
TETLP	336	14.4%	357	15.0%	306	13.4%	257	10.9%
Transco	41	1.7%	76	3.2%	62	2.7%	135	5.7%
West End Supply Total	2,155	92%	2,217	93%	2,163	94%	2,211	94%

TETLP – Supply Diversity

Supply Source	April 2021 - March 2022		April 2022 - March 2023		April 2023 - March 2024	
	Avg Daily (MDth/d)	Percentage	Avg Daily (MDth/d)	Percentage	Avg Daily (MDth/d)	Percentage
Appalachian Production	5,761	63.3%	6,064	61.7%	5,769	60.2%
Lebanon Area	225	2.5%	188	1.9%	251	2.6%
REX - Clarington	8	0.1%	4	0.0%	2	0.0%
ELA	279	3.1%	263	2.7%	262	2.7%
WLA	244	2.7%	612	6.2%	750	7.8%
ETX	205	2.2%	190	1.9%	157	1.6%
STX	661	7.3%	715	7.3%	754	7.9%
Other M1 and M2	1,029	11.3%	1,139	11.6%	1,007	10.5%
Other M3	466	5.1%	447	4.5%	405	4.2%
AGT to TE (NJ/NY Project)	218	2.4%	203	2.1%	232	2.4%
TETLP With Zones Total	9,095	100%	9,824	100%	9,588	100%