



By New Hampshire. For New Hampshire.

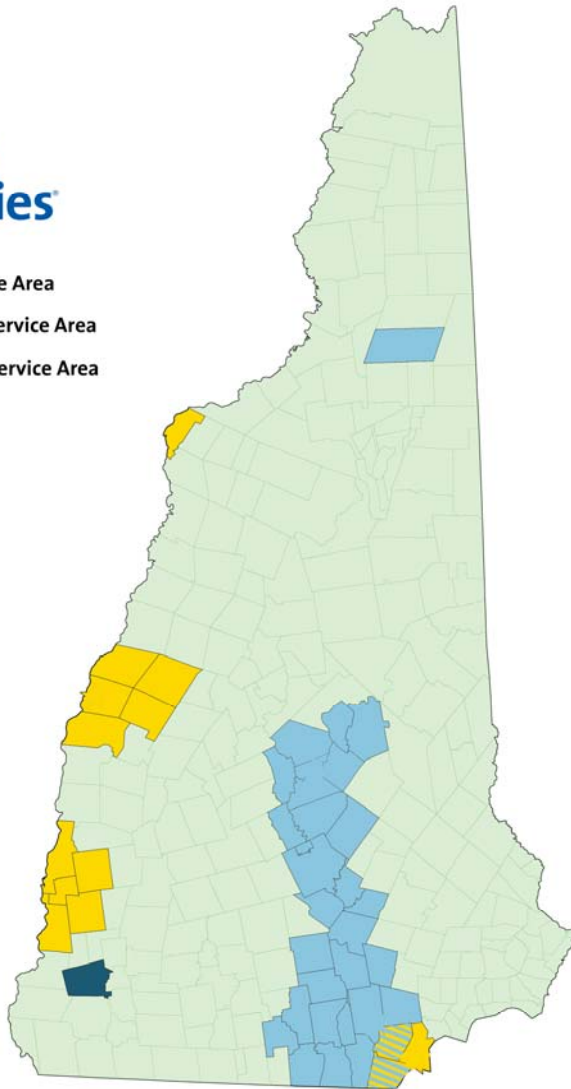
NGA 2018 Regional Market Trends Forum
Hartford, CT

May 3, 2018

About Liberty Utilities - NH



- Electric Service Area
- Natural Gas Service Area
- Propane/Air Service Area

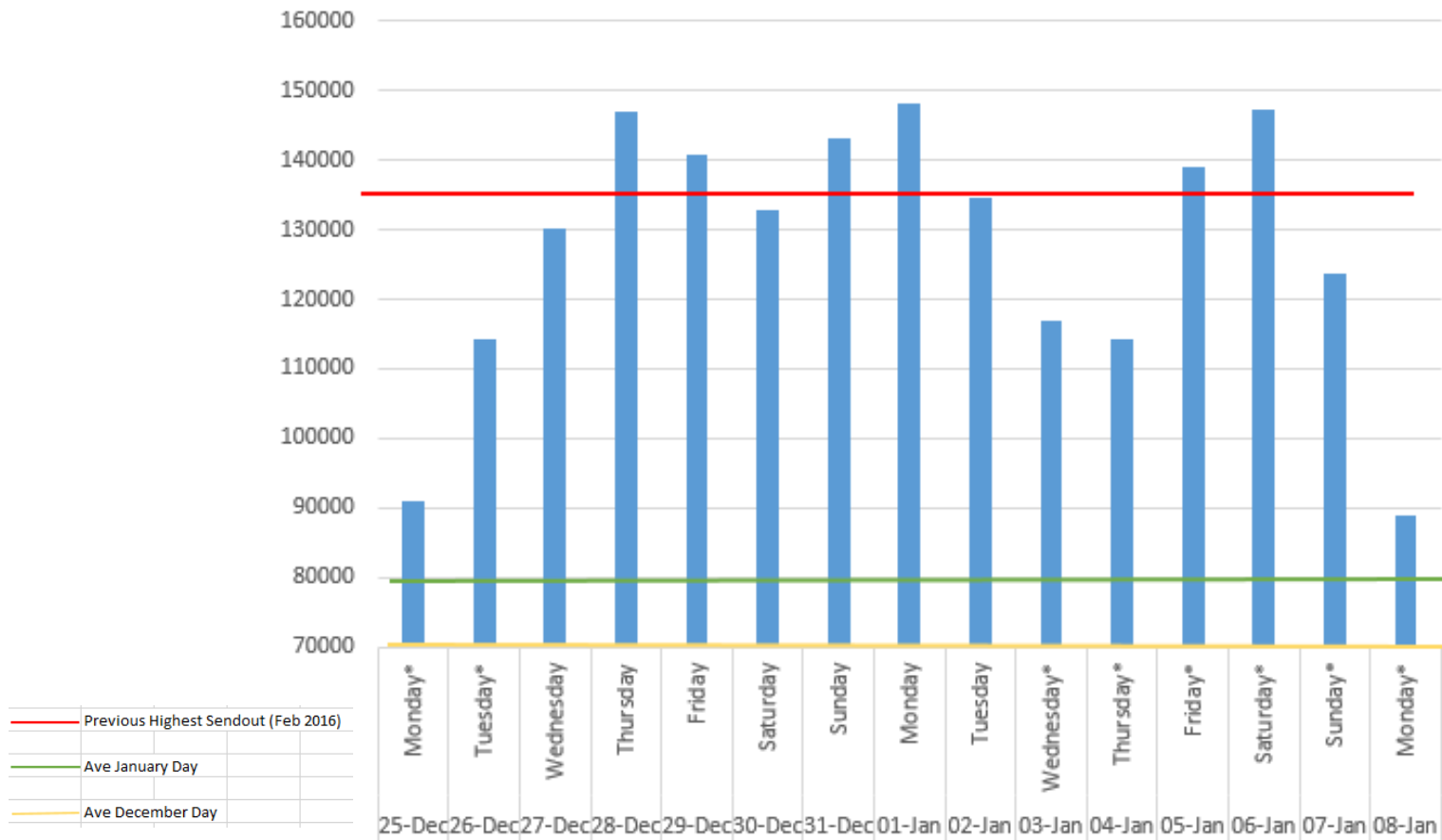


- 91,000 gas customers in 31 communities (I-93 Corridor)
- 43,000 electric customers in 21 communities (Salem area and Upper Valley / CT River)
- Headquartered in Londonderry
- 340 employees
- Natural gas customers served via interstate pipelines, 3 liquefied natural gas (LNG) and 4 propane storage facilities
- 5 customer walk-in centers (Concord, Lebanon, Salem, Londonderry & Keene)

Demand Continues to Increase

Six New Peak Sendouts During Cold Snap

EnergyNorth Daily Sendout (Dth/d)



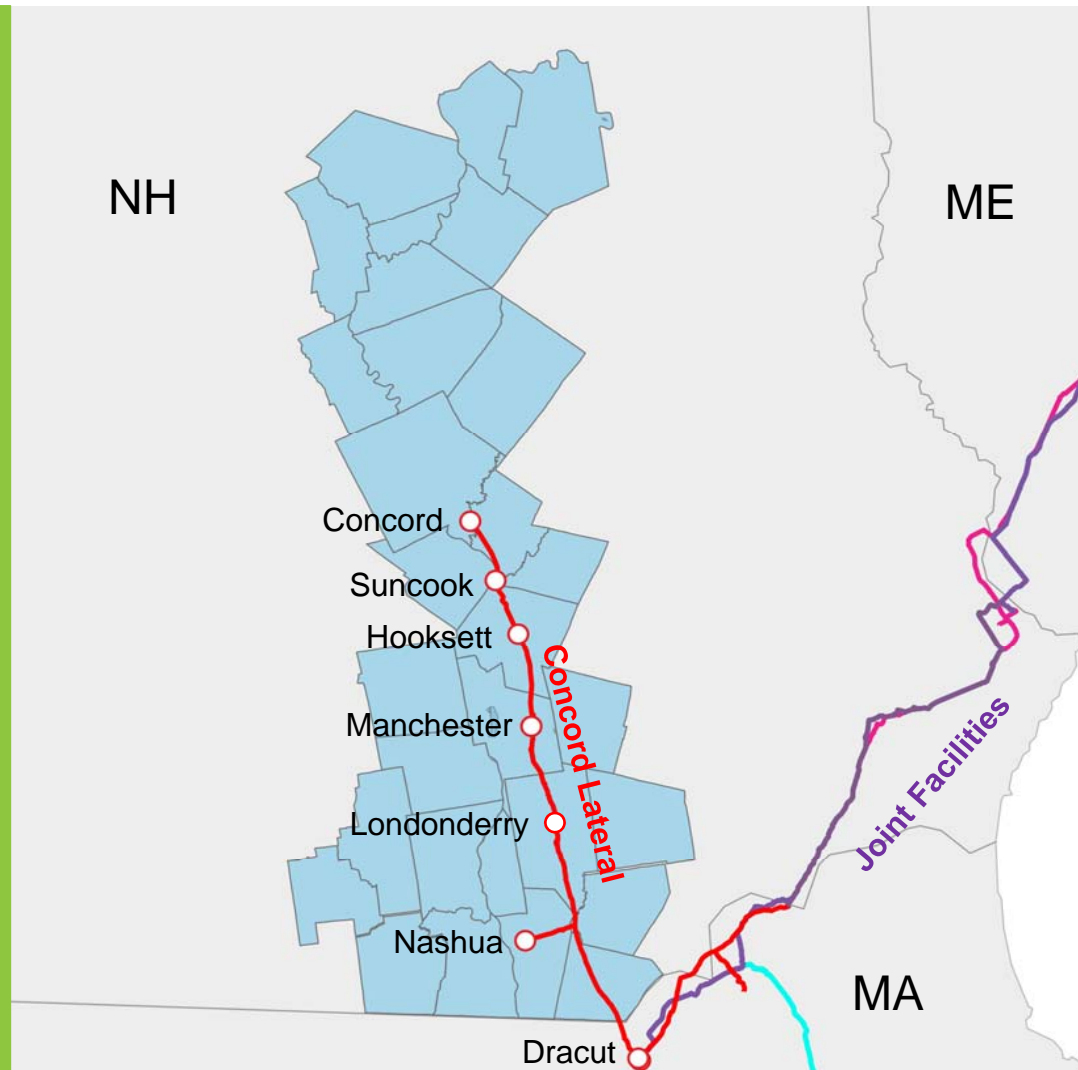
Needed Infrastructure Investment

Concord Lateral provides natural gas to southern and central New Hampshire

Concord Lateral has reached capacity

Without additional infrastructure:

- Limited natural gas supply
- Restricted economic growth
- Increased reliance on propane and oil



Granite Bridge Overview

Granite Bridge is a \$340 million natural gas pipeline and storage project designed to serve the residents and businesses of New Hampshire.

Pipeline

- 27 mile pipeline between Stratham and Manchester
- Located completely within NHDOT right-of-way along Route 101
- Use an “Energy Infrastructure Corridor”

Storage Facility

- 2 BCF liquefied natural gas (LNG) tank
- Located on 140 acre site in Epping (adjacent to Route 101)
- Full containment facility with state-of-the-art safety systems

Granite Bridge Pipeline

New 16" pipeline linking existing infrastructure

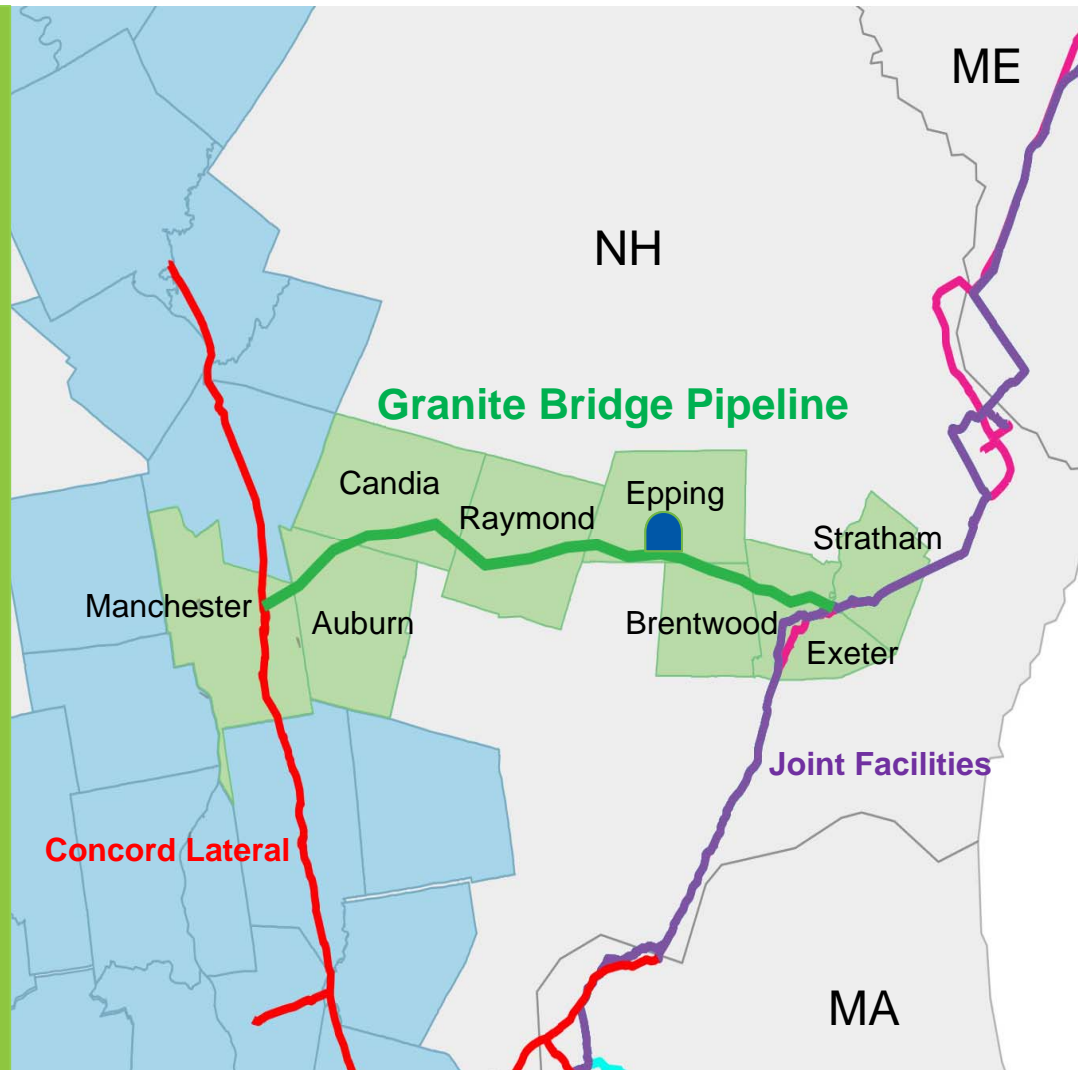
Located in NHDOT right-of-way along Route 101

Utilize an Energy Infrastructure Corridor

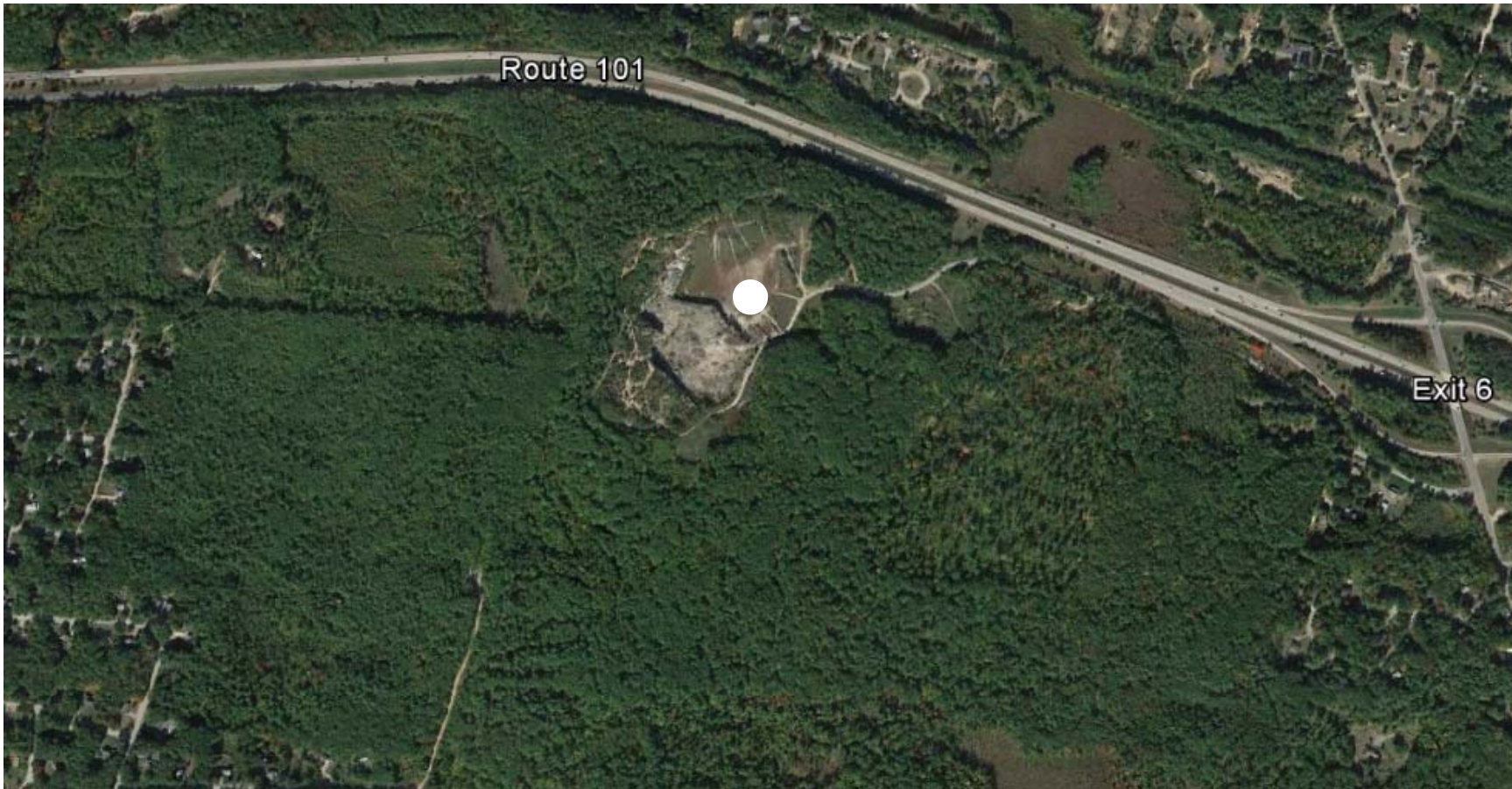
27 mile route between Manchester and Stratham

No eminent domain or FERC preemption

Lowest cost option to meet customers' needs

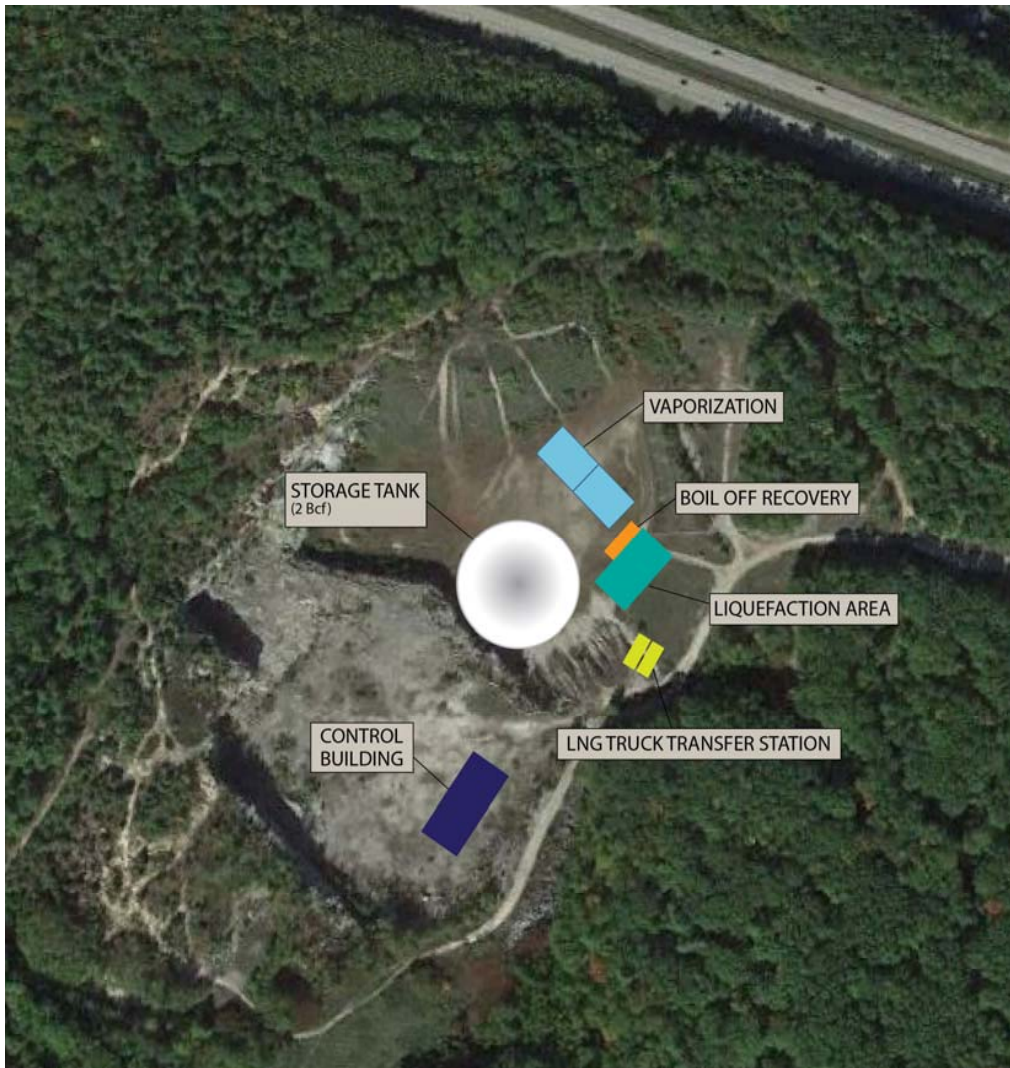


Granite Bridge Storage Facility - Epping



- 140 acre lot adjacent to Energy Infrastructure Corridor – Route 101
- Total facility footprint – 15 acres
- Site is an abandoned quarry, reducing visual impact

Granite Bridge Storage Facility



Designed to liquefy, store and vaporize natural gas

Full containment LNG storage tank system able to store 2 BCF of LNG

Approximately 150' - 170' high, 200' diameter

Physical low-cost hedge:
- filled in summer
- drawn upon in winter

Lowest cost supply option for customers

48 LNG storage facilities in New England, 118 in US

Savings to Customers

Compared to available alternatives, over 20 years:

\$240 million

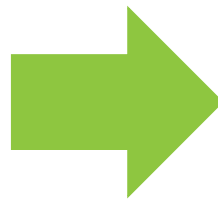
Savings from LNG Storage Facility compared to alternative supply contracts

\$710 million

Savings from new pipeline compared to alternative capacity options

\$950 million

Total project savings



What If???

LNG facility would have saved customers:

~\$40 million in 2013-14

~\$24 million in 2014-15

~\$12 million in 2015-16

~\$9 million in 2016-17

~\$20 million in 2017-18

~\$105 million

over last 5 winters

Commitment to Safety

The safety of our customers, employees and the public is our highest priority and a core value of Liberty Utilities

- LNG storage has been safely used for over 70 years to serve customers
- Granite Bridge has been designed to achieve the highest level of safety:

- Built to high consequence area standards
- Pipeline buried 48" underground, within NHDOT right-of-way
- Full x-ray of all pipeline welds, inspections at fabrication mill
- Pipeline inspections would exceed federal requirements
- Full containment LNG storage tank (tank within a tank)
- Impoundment areas designed to contain liquid, in unlikely event of a release
- On-site fire suppression and safety systems
- 24/7 on-site and remote (Londonderry) monitoring & control of storage facility and pipeline
- Coordination and training with first responders

Benefits to Communities

- **Potential new natural gas service to towns along Route 101**
 - Candia, Raymond and Epping
- **Lower energy costs**
 - Natural gas less expensive than competing heating fuel options
 - Provides more residents and businesses with access to award winning energy efficiency programs
- **Contributor to economic development**
 - Low cost natural gas spurs economic development
- **Local property tax revenue**
 - Over \$200 million estimated total state and local property tax revenue for all communities, over the life of the project

Regulatory Review Process

- **New Hampshire Public Utilities Commission (NHPUC)**
reviews the project economics and need
 - Evaluate projected customer needs
 - Determine if project is least-cost option
- **Site Evaluation Committee (NHSEC)**
 - Determine if Liberty Utilities has managerial capability to construct and operate the project
 - Determine if the project will affect:
 - aesthetics
 - historic sites
 - air and water quality
 - the natural environment
 - public health and safety



Next Steps / Timeline

2017	Initial outreach to communities and key stakeholders (Early-to-Late November)
	Public announcement of the project (December 4)
	Filing for NHPUC approval of project economics (December 22)
2018	Continued Public Outreach
	File Application with NHSEC (4 th Quarter)
	NHPUC Hearings
2019	NHPUC Decision
	Continued Public Outreach
	NHSEC Decision
2020	Continued Public Outreach
	Construction Commences
2021	Continued Public Outreach
	Pipeline Construction Concludes
	Pipeline In-Service
2022	Continued Public Outreach
	LNG Storage Facility Construction Concludes
	LNG Storage Facility In-Service

Thank You

For more information:

- **www.granitebridgenh.com**
- **info@granitebridgenh.com**